

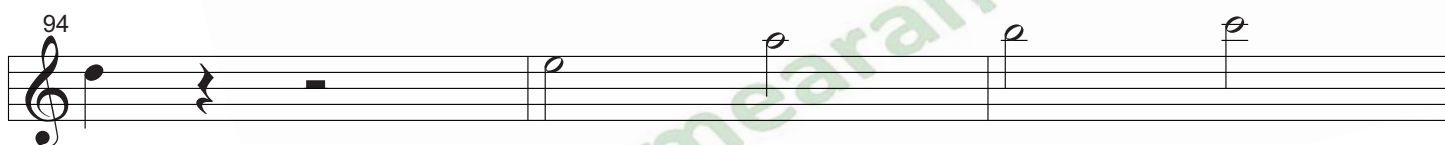
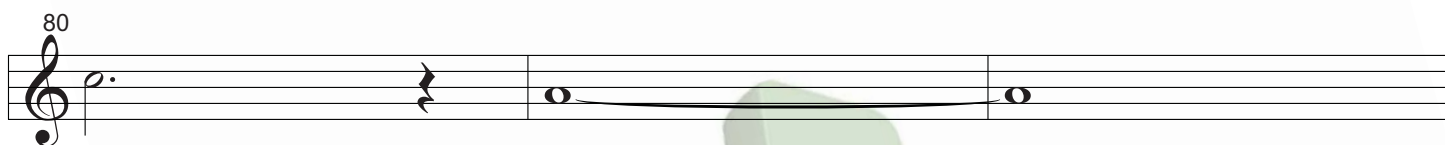
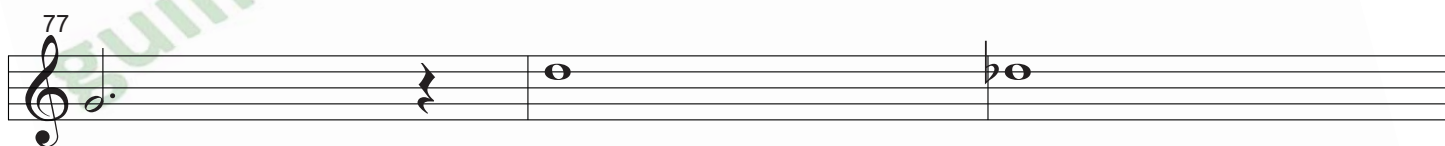
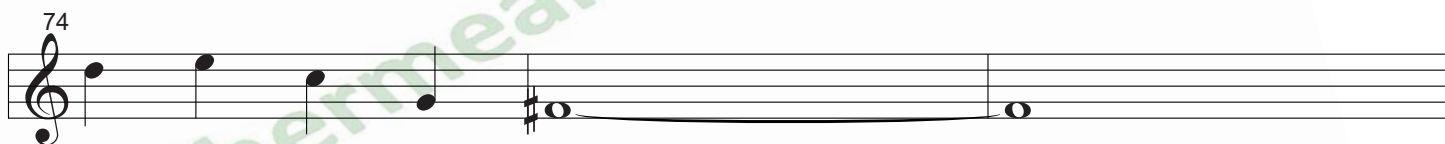
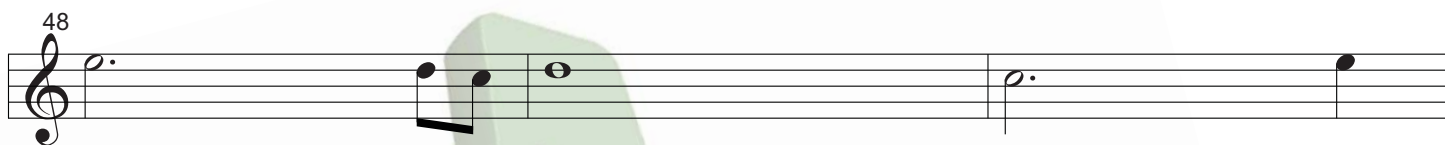
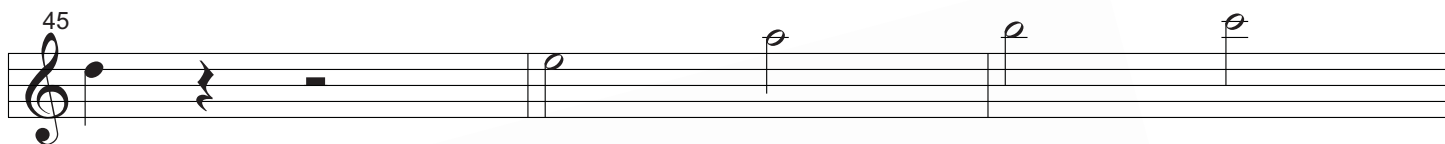
MUITO DIFERENTE

Guilherme Arantes

Flauta 1

The musical score for Flauta 1 consists of eight staves of music. The first staff begins with a treble clef, a common time signature (C), and a first ending bracket (1). The melody starts on a half note, followed by a series of eighth and quarter notes. The second staff continues the melody with eighth notes and a half note. The third staff shows a measure with a half note, followed by a measure with a whole note, and a final measure with a whole note and a first ending bracket (16). The fourth staff begins with a measure containing a half note, followed by a measure with a whole note, and a final measure with a whole note. The fifth staff starts with a measure containing a half note, followed by a measure with a whole note, and a final measure with a whole note. The sixth staff begins with a measure containing a half note, followed by a measure with a whole note, and a final measure with a whole note. The seventh staff starts with a measure containing a half note, followed by a measure with a whole note, and a final measure with a whole note. The eighth staff begins with a measure containing a half note, followed by a measure with a whole note, and a final measure with a whole note. The score includes various musical notations such as notes, rests, and brackets.

Muito fl 1



Muito fl 1

